

4

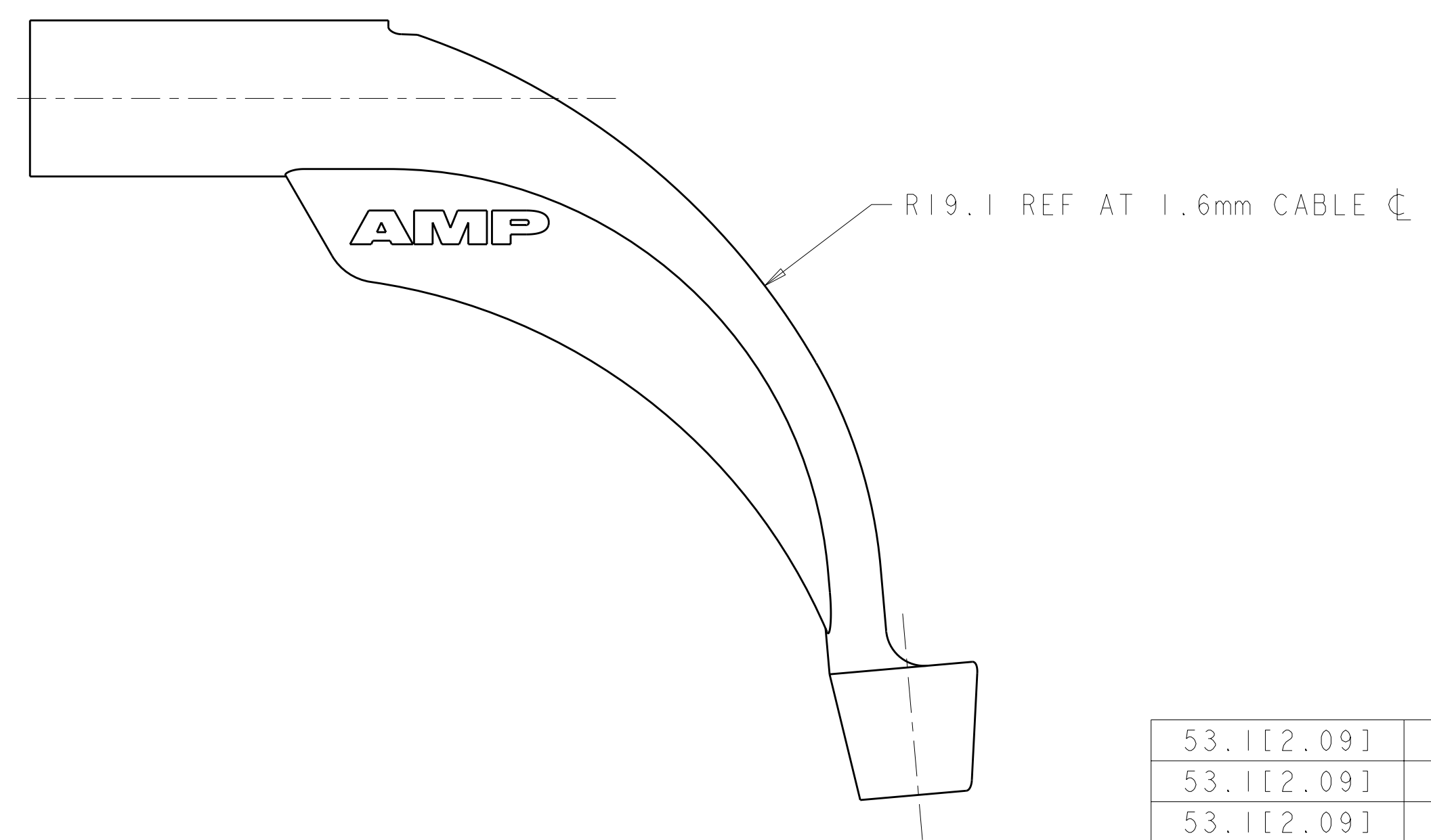
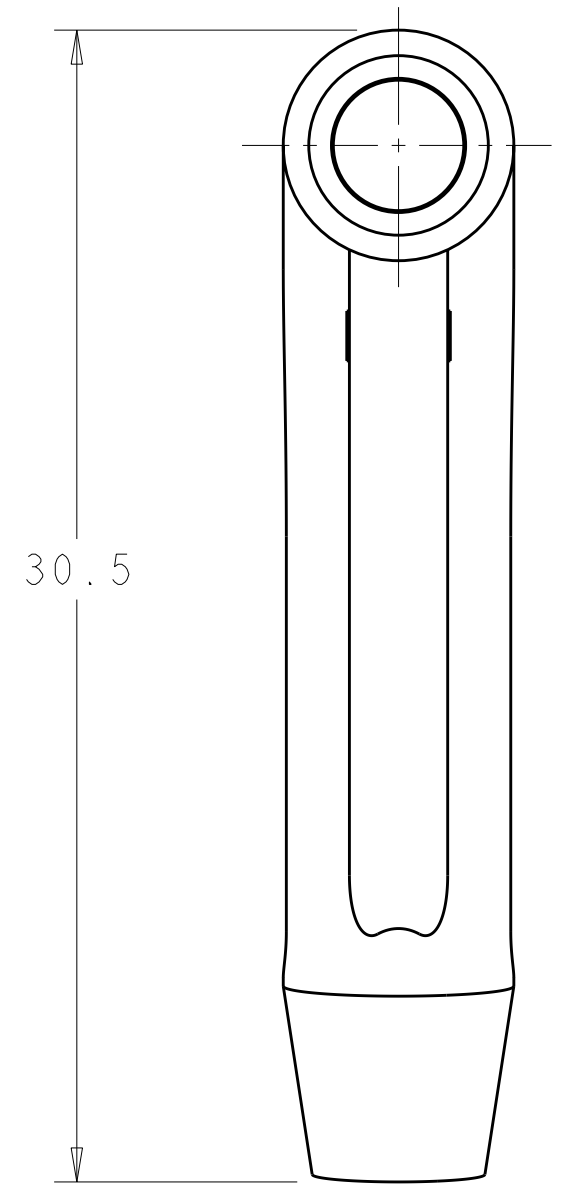
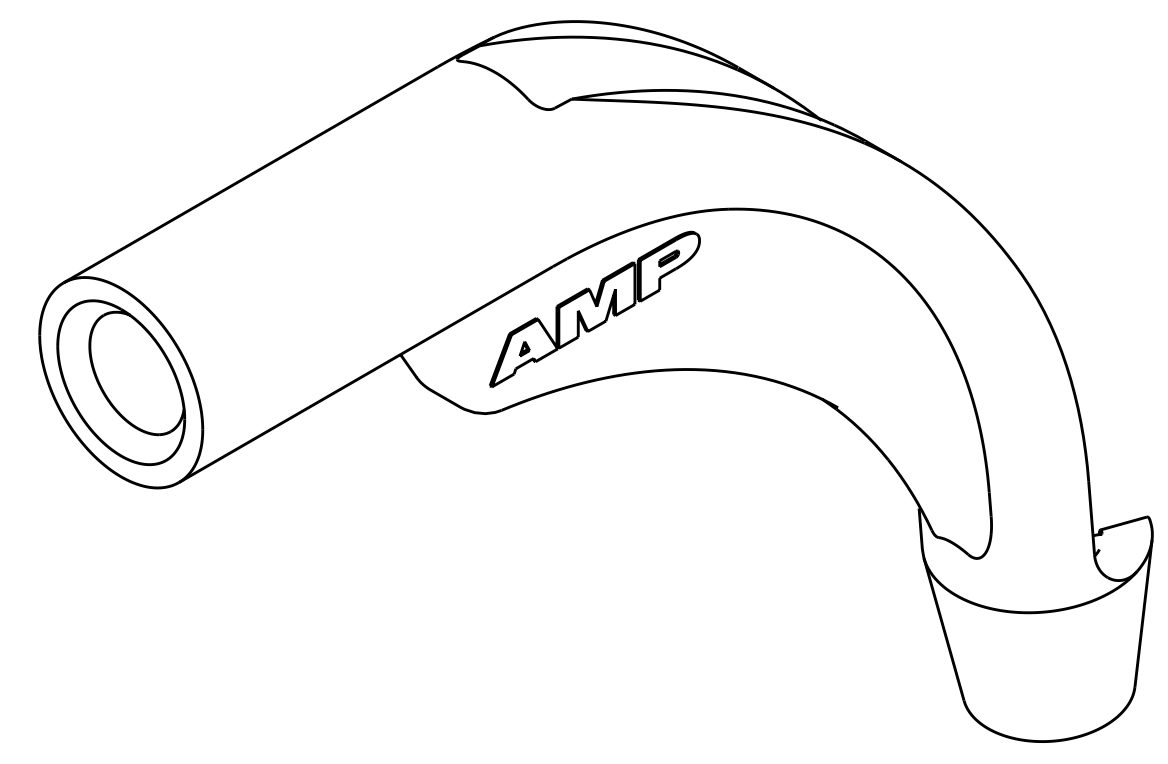
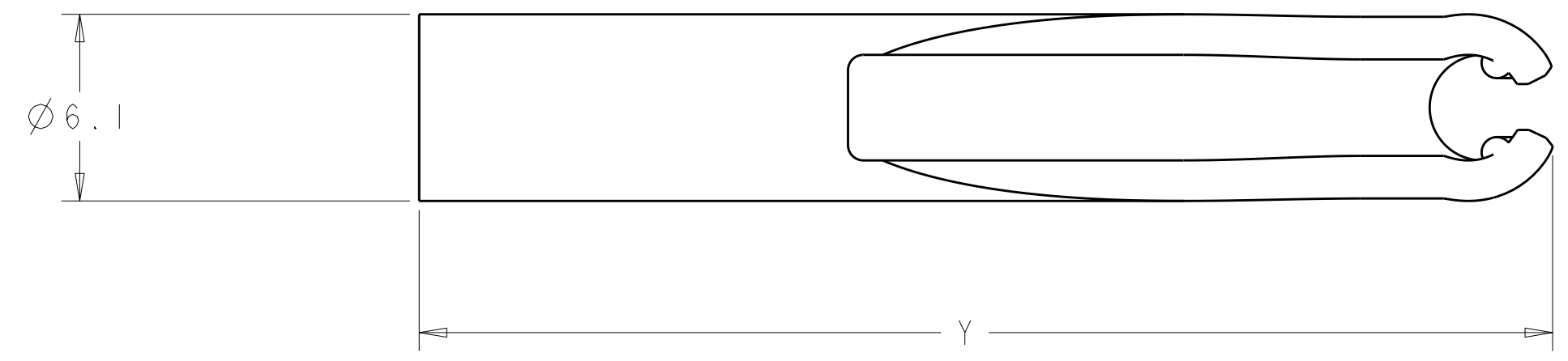
3

2

1

THIS DRAWING IS UNPUBLISHED. RELEASED FOR PUBLICATION  
 © COPYRIGHT 2011 ALL RIGHTS RESERVED.

LOC		DIST		REVISIONS			
P	LTR	DESCRIPTION	DATE	DWN	APVD		
	F2	REVISED PER ECO-11-005140	16APR2011	RK	HMR		



53.1[2.09]	RED	DUPLEX	1-1374737-6
53.1[2.09]	BEIGE	DUPLEX	1-1374737-4
53.1[2.09]	BLUE	DUPLEX	1-1374737-3
37[1.46]	RED	SIMPLEX	1374737-4
37[1.46]	BLACK	SIMPLEX	1374737-3
37[1.46]	BEIGE	SIMPLEX	1374737-2
37[1.46]	BLUE	SIMPLEX	1374737-1
DIM Y	COLOR	DESCRIPTION	PART NO

⚠ MATERIAL: TPE, UL 94 V-0 RATED AT QUALIFYING THICKNESS, SEE TABLE FOR COLORS.  
 2. BULK PACKAGED.

THIS DRAWING IS A CONTROLLED DOCUMENT.		DWN D. ERDMAN 9-05-00	TE Connectivity	
DIMENSIONS: mm		CHK M. GURRERI 9-05-00		
TOLERANCES UNLESS OTHERWISE SPECIFIED:		APVD S. BUCHTER 9-05-00	NAME BOOT, OPEN ANGLED, 1.6-2.0mm REAR BODY	
0 PLC ±0.1 1 PLC ±0.1 2 PLC ± 3 PLC ± 4 PLC ± ANGLES ± FINISH		PRODUCT SPEC -	SIZE A2	
MATERIAL		APPLICATION SPEC -	CAGE CODE -	DRAWING NO C-1374737
⚠		WEIGHT -	RESTRICTED TO -	SCALE 5:1
		CUSTOMER DRAWING	SHEET 1	OF 1
			REV F2	