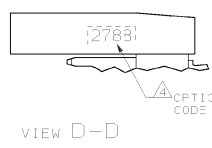
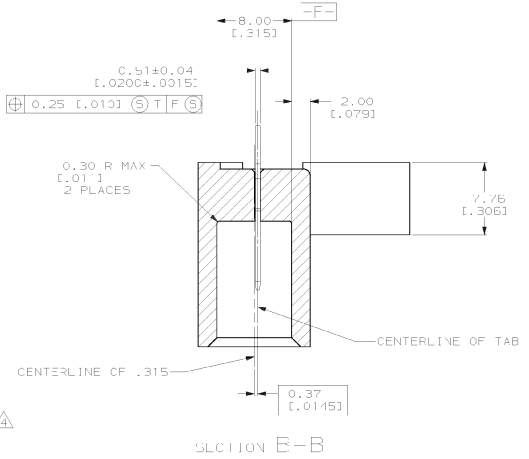
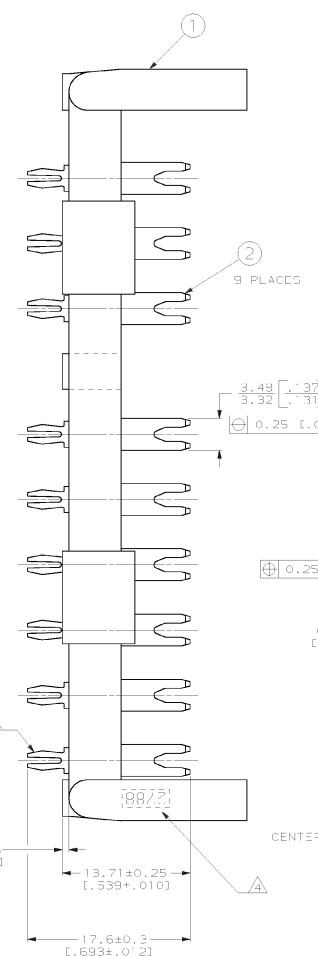
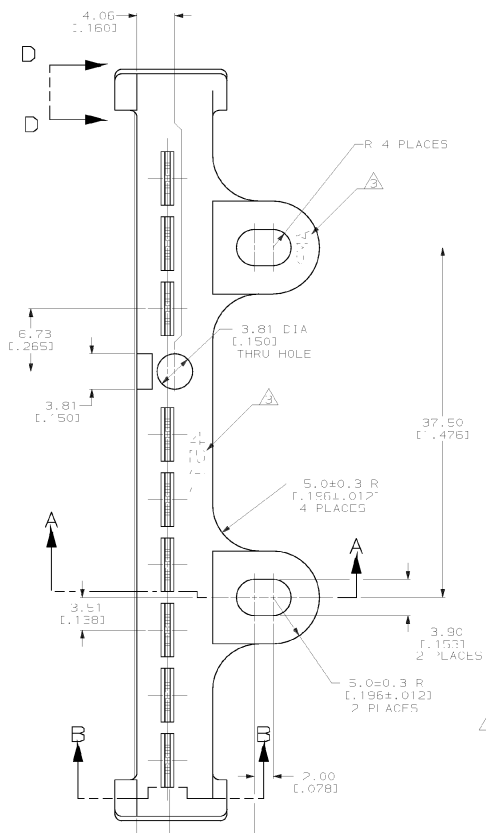
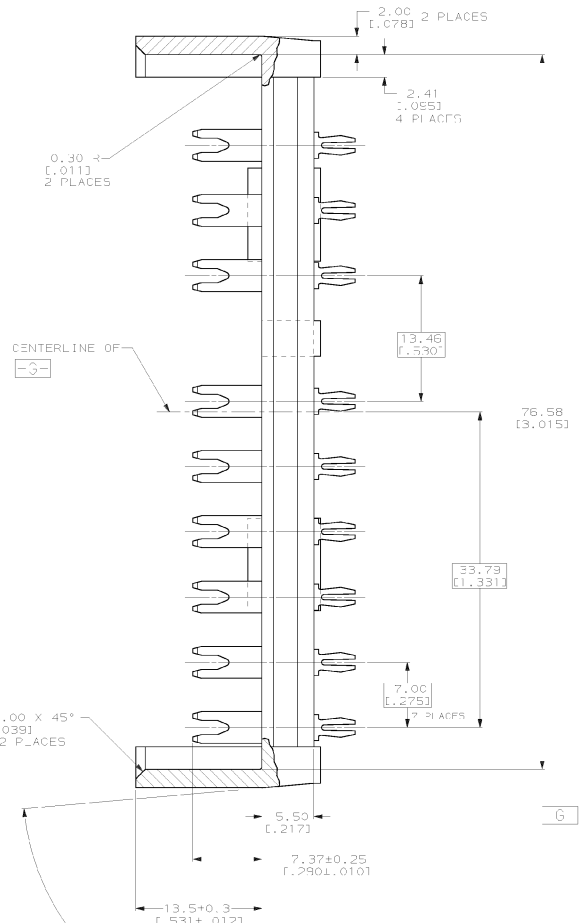


REV. NO.		ZONE		DESCRIPTION		DATE	APP'D
AF	50			N	REV PER 0110-3249-97	28A0207	RSYER

- ⚠ POSTS TO FIT INTO 1.78-1.93 [.070-.076] DIA HOLE, 1/16 THICK P.C. BOARD.
- > 1.00 (.039) RADII, 1° DRAFT PERMISSIBLE EXCEPT AS NOTED.
- ⚠ AMP LOGO AND LAST FOUR DIGITS OF A.C. SPARK NUMBER RECESSED IN HOUSING.
- ⚠ DATE CODE (WEEK, YEAR) LOCATED IN THIS AREA.
- ⚠ 0.00381 [.000150] MIN TIN PER MIL T 10727 OVER
- ⚠ 0.00254 [.000100] MIN COPPER PER MIL-C-14550.



PARTIAL SECTION A A

METRIC

⚠	#6 HARD BRASS	TERMINAL ②	520845 1
BLACK	POLYESTER 40% GLASS/MINERAL FILLED	HOUSING ①	
FINISH	MATERIAL	COMPONENT, ITEM NO	PART NO

DO NOT SCALE PRINT. UNLESS SPECIFIED DIMENSIONS IN MM (INCHES): TOLERANCES ON + 2 P.LC DEC ± 0.15 (1.00) 3 P.LC DEC ± . - ANGLES ± -	DR 3/12/91 MICHAEL S. FEHER CHK 3/18/91 JEFF T. BUSH APP'D 3/18/91 KURT RANDELPH MATERIAL OFF TARI F FINISH SEE TABLE	AMP Incorporated Harrisburg, PA 17102-3006 NAME ASSEMBLY, TAB, POKE-IN, MAG-MATE™ APPLICATION SPEC 114-2113 WEIGHT -	SIZE D SCALE 4:1 SHEET 1 OF 1
--	---	---	-------------------------------------