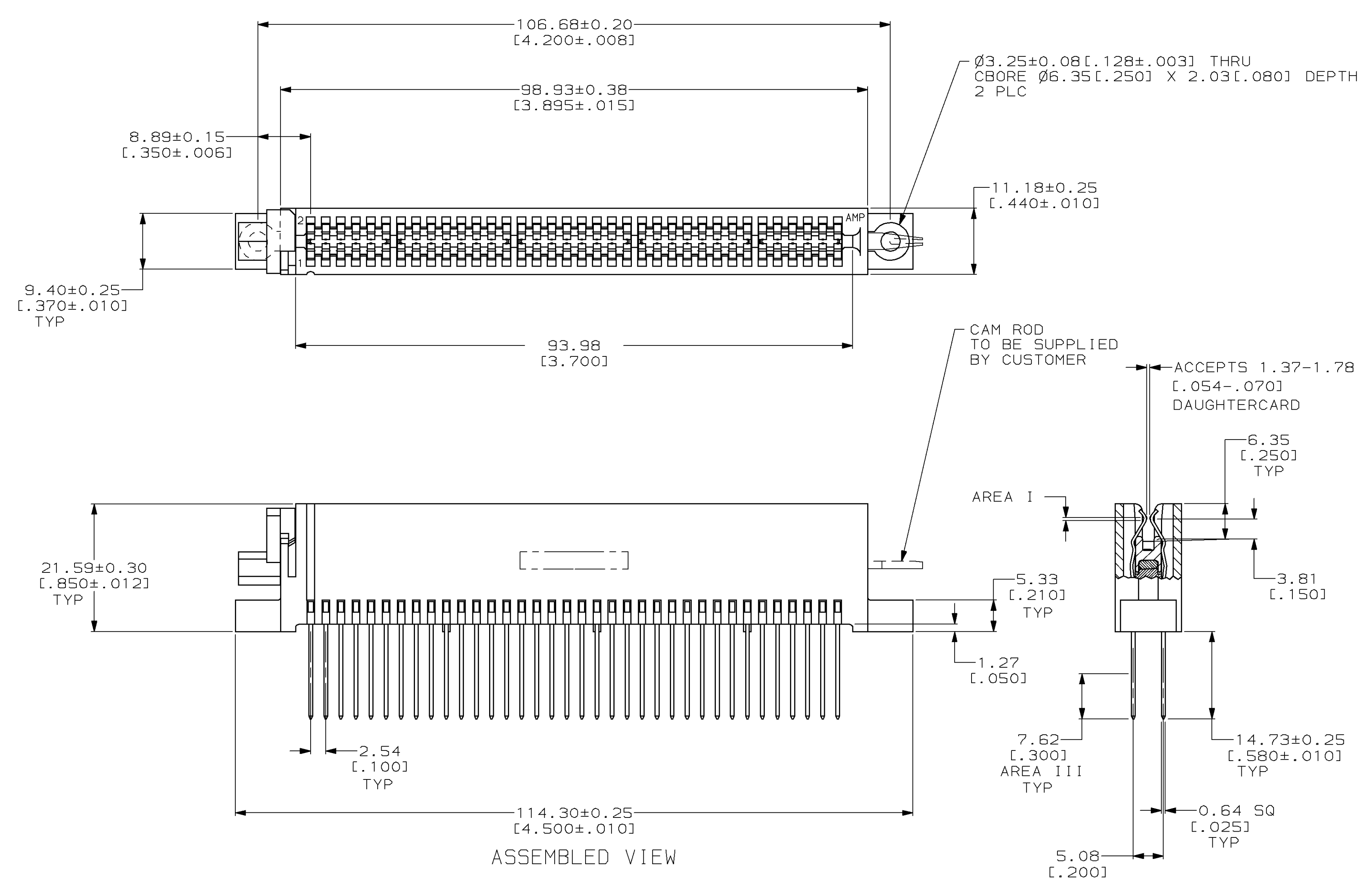
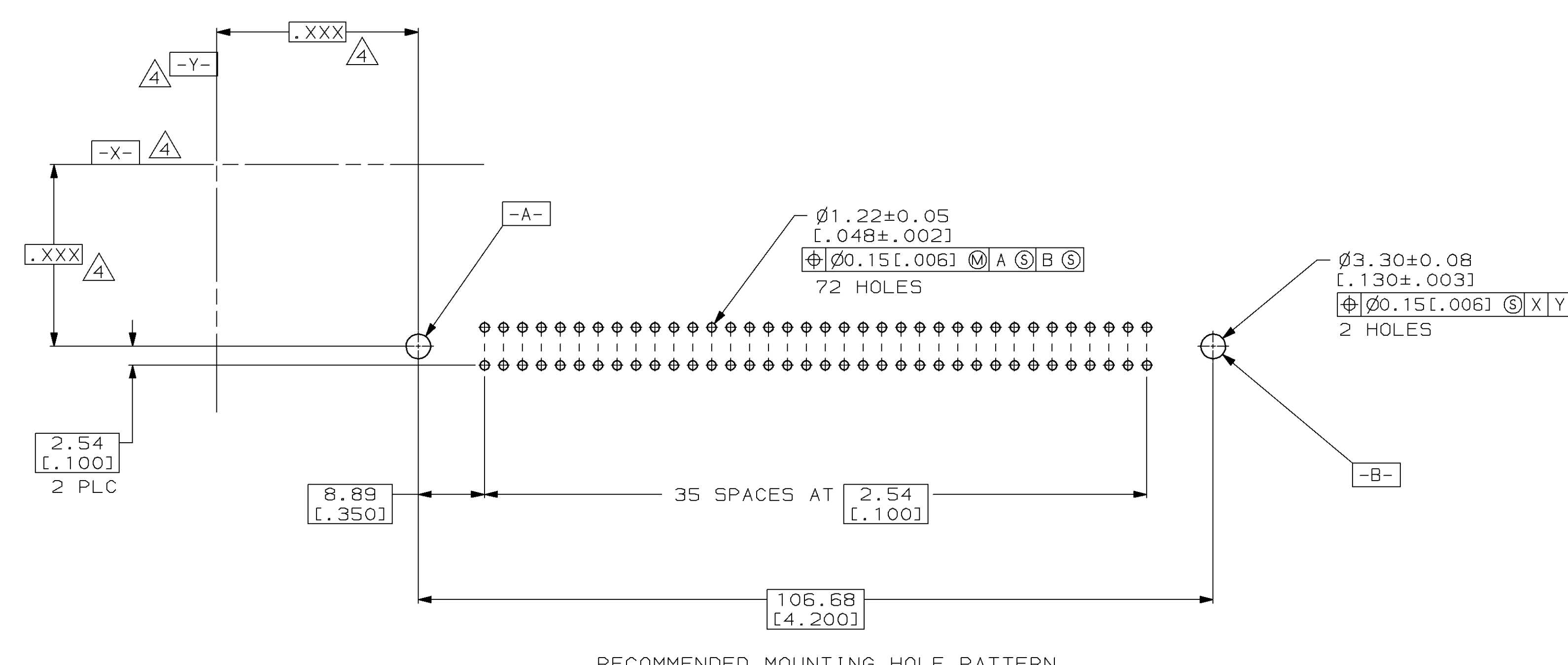
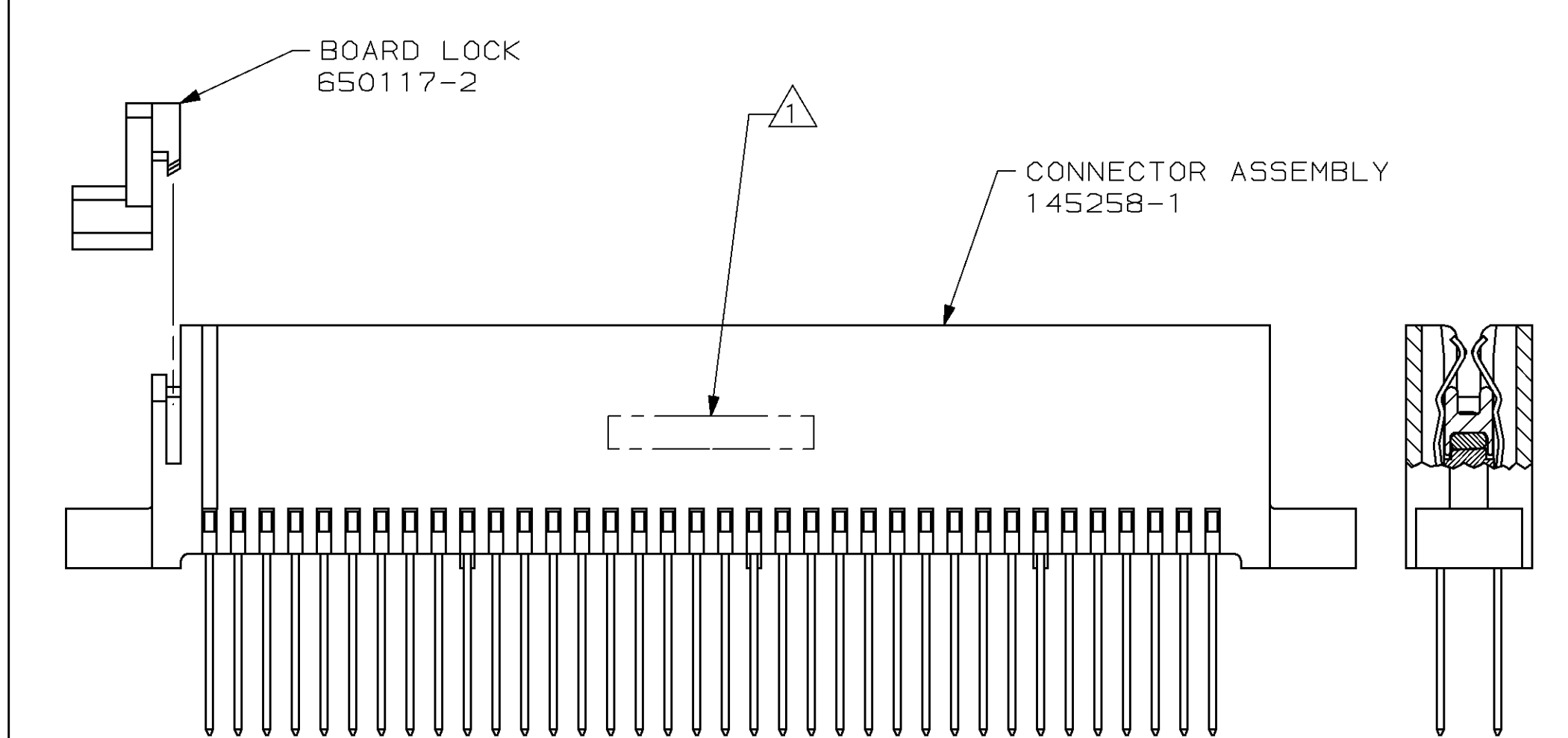


LOC		DIST		REVISIONS				
FT	22	P	LTR	DESCRIPTION	DATE	OWN	APVD	
		0	RLSE	PER NPR 64 WAS 97-S241-2-1	22 OCT 97	-	-	
		A	REV	PER EC 0652-23-98	18 MAY 98	CO	DW	
		C	REV	PER EC 0320-373-97	03 JUN 98	DH	HR	



- ① APPROXIMATE LOCATION OF PART NUMBER AND DATE CODE, EITHER SIDE.
- ② CONNECTOR ASSEMBLY:  
HOUSING: POLYESTER, BLACK.  
CONTACT: PHOSPHOR BRONZE.  
CAM INSERT: POLYPHENYLENE SULFIDE, NATURAL.  
BOARD LOCK: POLYESTER, BLACK.
- ③ CONTACT: AREA I 1.27µm [.000050] MIN GOLD, AREA III 0.76 [.000030] MIN GOLD OVER 1.27µm [.000050] MIN NICKEL.
- ④ DATUMS AND BASIC DIMENSIONS TO BE ESTABLISHED BY CUSTOMER.



145293-1  
 PART NUMBER

THIS DRAWING IS A CONTROLLED DOCUMENT.		OWN C. OBERMAN	22 OCT 97	<b>AMP</b> AMP Incorporated Harrisburg, PA 17105-3508
DIMENSIONS: mm (INCHES)		CHK R. STONE	24 OCT 97	
TOLERANCES UNLESS OTHERWISE SPECIFIED:		APVD D. WIKI	17 MAY 98	NAME CONNECTOR KIT, UNASSEMBLED, 2.54 [.100] X 5.08 [.200] C, 36 DUAL POSN, 108-9048 0.64 [.025] SQ POST, 0-C ROTARY ZIF
0 PLC ± 1 PLC ± 2 PLC ±0.13 (.005) 3 PLC ± 4 PLC ± ANGLES ±		PRODUCT SPEC 108-9048	APPLICATION SPEC	
MATERIAL	FINISH	WEIGHT	SIZE A1	CAGE CODE 00779
CUSTOMER DRAWING		SCALE 2:1	SHEET 1 OF 1	REV C