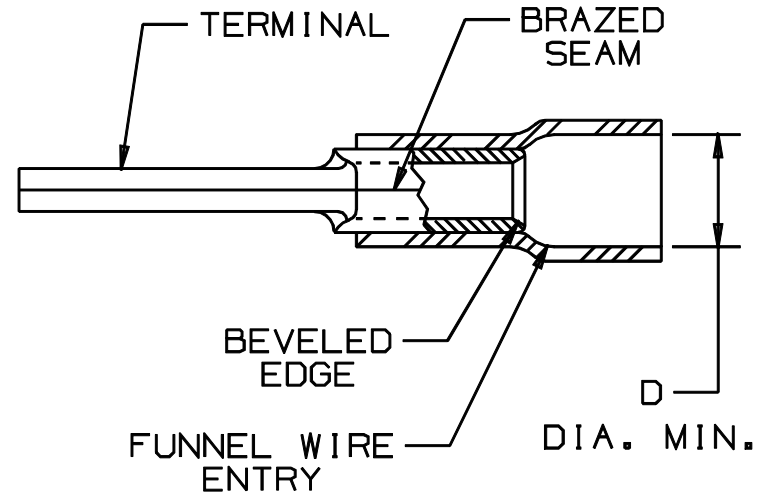


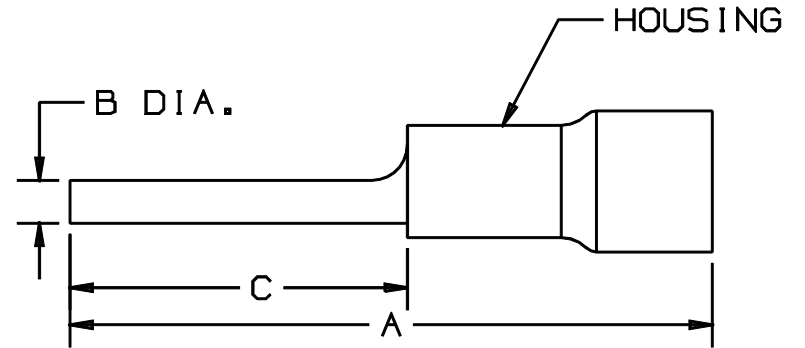
THIS COPY IS PROVIDED ON A RESTRICTED BASIS AND IS NOT TO BE USED IN ANY WAY DETRIMENTAL TO PANDUIT

| PANDUIT PART # | | WIRE SIZE mm ² | DIMENSIONS mm | | | | HOUSING COLOR |
|----------------|----------|---------------------------|----------------|--------------|---------------|--------------|---------------|
| PREFIX | PK | | A ±.8 | B DIA. ±.3 | C ±.5 | D DIA. | |
| PMV1-P10 | -C -M | 0,5-1,5 | 21,1 (.83) | 2,0 (.08) | 11,9 (.47) | 3,8 (.15) | RED |
| PMV2-P10 | -C -M | 1,5-2,5 | 21,1 (.83) | 2,0 (.08) | 11,9 (.47) | 4,3 (.17) | BLUE |
| PMV6-P10 | -L -D | *2,5-6,0 | 27,9 (1.10) | 2,5 (.10) | 14,0 (.55) | 6,4 (.25) | YELLOW |



NOTES:

- USED FOR:
A. SOLID OR STRANDED COPPER WIRE
*B. WIRE RANGE: 4,0-6,0mm² FOR CT-1551M
- MATERIAL:
A. STAMPING - COPPER, TIN PLATED
B. HOUSING - VINYL
- DIMENSIONS IN BRACKETS ARE IN INCHES
- PACKAGE QTY:
A. STD: -L=50, -C=100
B. BULK: -D=500, -M=1000
- WIRE STRIP LENGTH: 7,1 $\begin{matrix} +.8 \\ -0 \end{matrix}$ (9/32 $\begin{matrix} +1/32 \\ -0 \end{matrix}$)
- INSTALLATION TOOLS: REF. DWGS. A41522, A41523, A41524, A41525



A41446_04

| | | | | | | | |
|-----|-------|-----|-----|----------------------------------|-------|------|-----|
| 04 | 10/97 | TM | | CHANGED DECIMAL POINTS TO COMMAS | | | |
| 03 | 5/97 | TM | WJB | CORRECTED SPELLING ERROR | 05827 | LA | DBH |
| 02 | 3/97 | JKD | SKB | ADDED CT-1551M TO NOTES | 05700 | LA | DBH |
| 01 | 10/94 | TH | RLS | UPDATED NOTES AND DIMENSIONS | 2545 | LA | KS |
| REV | DATE | BY | CHK | DESCRIPTION | ECN# | CUST | PM |

PANDUIT

CORP.

TINLEY PARK, ILLINOIS

VINYL INSULATED METRIC PIN TERMINAL

| | | | |
|----------|-------|-------|-------------|
| DRAWN BY | CHK'D | SCALE | DRAWING NO. |
| BDK | RLS | NONE | 41446A |