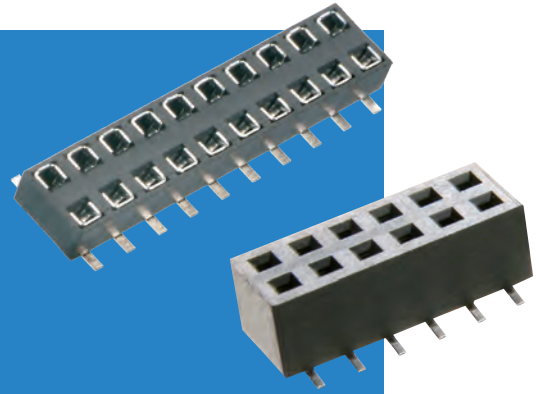


M22 Connectors

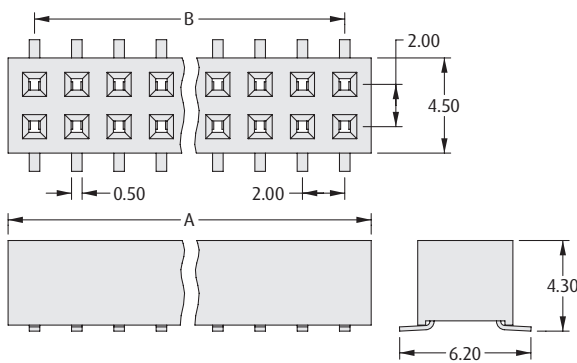
Female Vertical Surface Mount, Dual Entry

- ❖ Dual entry sockets - can be used as either a top entry or bottom entry configuration.
- ❖ The low profile socket has locating pegs, to assist with correct positioning and minimised movement during soldering.
- ❖ Twin beam contact for cost-effective reliability.
- ❖ Contact technical@harwin.com for Tape and Reel options.



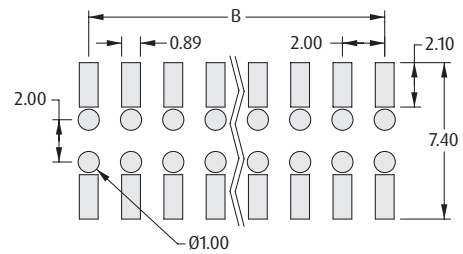
2mm (.079") PITCH

4.30mm HIGH



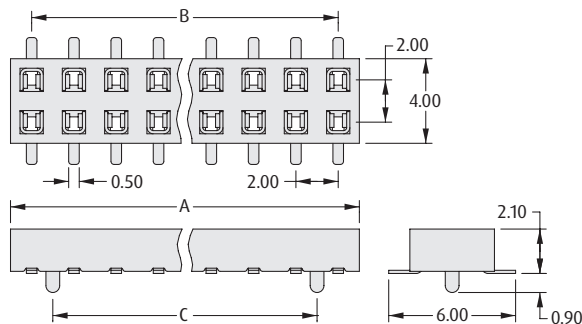
CALCULATION

A	$B + 2.5$
B	$2 \times (\text{No. of contacts per row} - 1)$



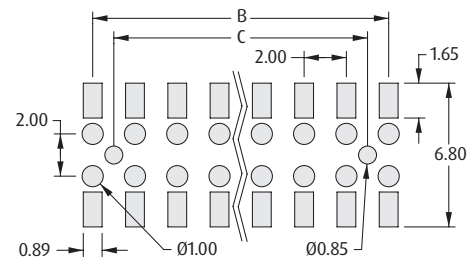
Recommended PC Board Pattern

2.10mm HIGH



CALCULATION

A	$2 \times \text{No. of contacts per row}$
B	$2 \times (\text{No. of contacts per row} - 1)$
C	$B - 2$



Recommended PC Board Pattern

HOW TO ORDER

M22 - 63 X XX XX

SERIES CODE

TYPE

4	4.30mm high
6	2.10mm high

FINISH

42	Gold + Tin
46	Tin (2.10mm high only)

NO. OF CONTACTS PER ROW

03 to 20	4.30mm high
02 to 20	2.10mm high

All dimensions in mm.